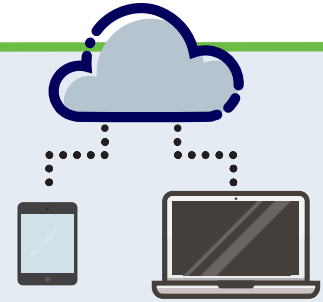
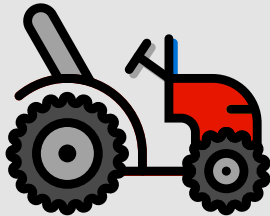


## Infrastructure and Capital Costs

Large capital investment in dedicated servers, software and training. It all has to be maintained, and it takes time to get set up and running. Plus, you need to hire the specialists to do the work.

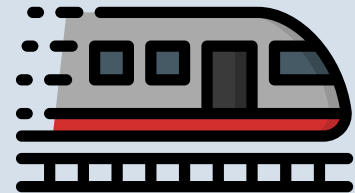


The world's first entirely cloud-based, on-demand system for automatic application assessment, remediation and conversion that requires no infrastructure or investment.

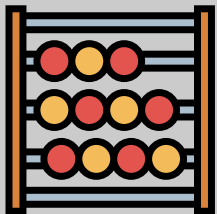


## Dynamic Assessment

Definitely not "dynamic". You can't specify your current build, nor a specific build to migrate to. It's just not designed for "Windows-as-a-Service". Reports are obsolete before you receive them.

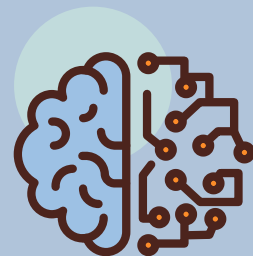


Choose your source and Destination platform. From Windows 7 32-bit right up to the latest month's release from Microsoft. Just specify where you are, and where you need to be.

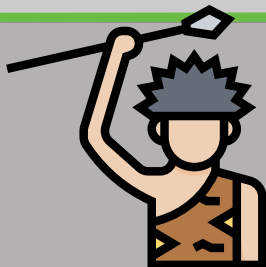


## Patch Impact Analysis

Nope. Reports lack the granularity to provide meaningful analysis of individual patches. It can be done, but requires a build engineer each time, and monolithic reports must be sifted through.



Our analysis is extra smart. Only Readiness can match each CVE entry to a potential deployment issue within a specific application package.



## EXE to MSI Conversion

Not really. Only MSI to App-V conversions are possible. It's not automated, with no support for batch processing. Plus, all infrastructure must be local only.



Readiness can automatically convert your legacy EXE packages to perfect MSIs, ready for deployment. Big or small, always perfectly formed.